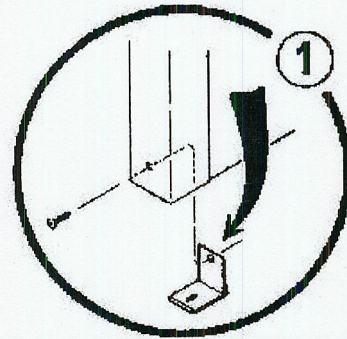
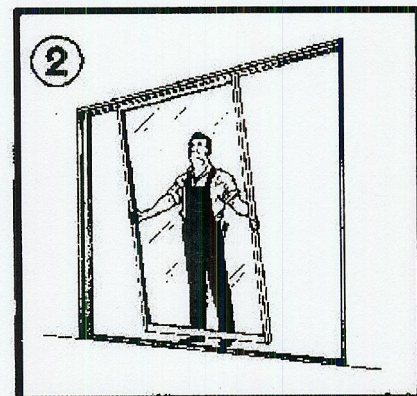


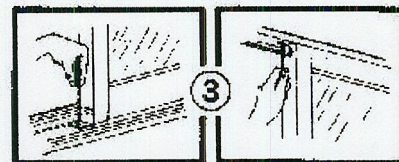
1. SECURE fixed panel sill anchor to vertical stile with #8 ½" truss head self-tapping screw. Be sure anchor is secured to the stile that will occur at the center of the door (Fig. 1)



2. INSERT FIXED PANEL up into the middle channel of the frame at the head and lower into the THRESHOLD RECESS. Slide panel as far as possible into the jamb pocket.

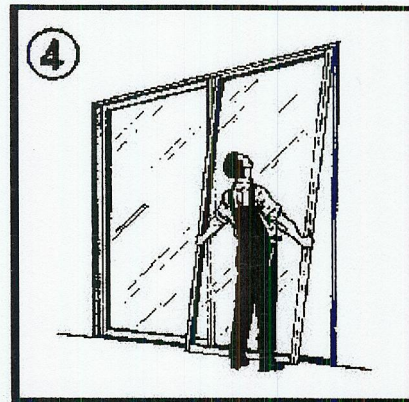


3. SECURE head anchor to head and secure sill anchor to threshold with #8 x ½" truss head self-tapping screws (Fig. 3).

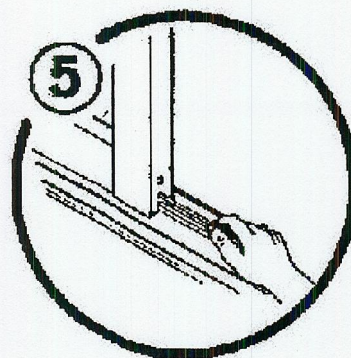




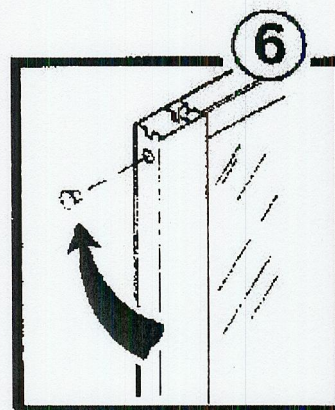
4. INSERT OPERATING PANEL into head and lower onto the threshold track. MAKE SURE vinyl sweeps are clear of track (Fig. 4).



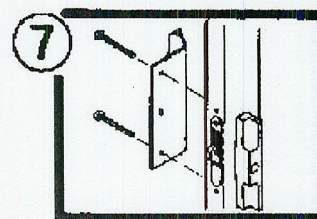
5. ADJUST ALIGNMENT of sliding panel by using adjustment screws in rollers at bottom (both sides) for correct alignment of operating panel with frame (Fig. 5).



6. Install rubber bumpers into lock stile (Fig 6).

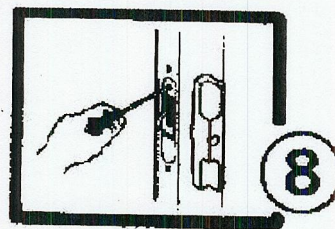


7. Install handle set as shown (Fig. 7).





8. ADJUST LOCK THROW so lock engages frame properly (Fig. 8).



FRAME MUST BE SET PLUMB AND LEVEL TO ASSURE PROPER FUNCTIONING OF SLIDING PANELS.

NOTE: If operating panel will not close completely, loosen anchor screws in head and threshold (see step 3) and pull fixed panel away from jamb slightly. There will be no loss of weathering ability. Tighten screws after adjustment is made.