

# COLUMBIA WINDOWS



**Columbia**

*Aluminum Windows  
& Doors*



# Series 2000

## Thermal Break Single Hung Tilt Sash Window

The Series 2000 is Columbia's energy efficient, thermal break single hung tilt window. This window can be manufactured in standard sizes for new construction or custom sizes for retro fit applications.

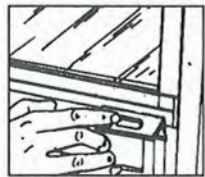
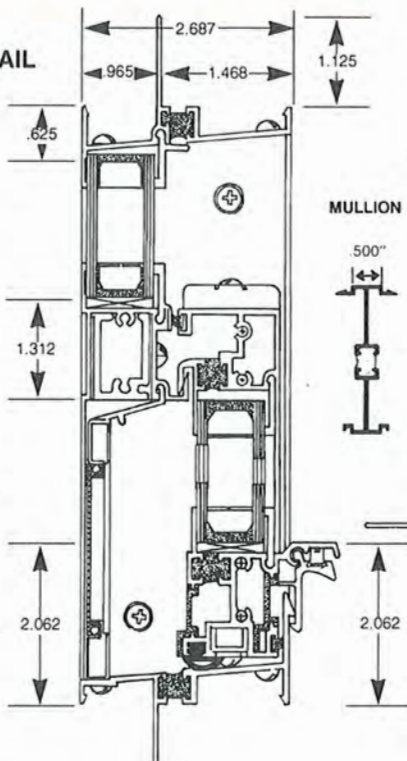


### Standard Sizes

Standard Window Size	Rough Opening		Actual Size		Glass Size		Screen Size		Divided Light Config.
	Single Unit		Single Unit		Width	Height	Width	Height	
	Width	Height	Width	Height					
2026	24	30	23 1/2	29-1/2	19 3/4	12 3/4	19 3/4	14 3/8	4/4
2030		36		35-1/2		15 3/4		17 3/8	4/4
2038		44		43-1/2		19 3/4		21 3/8	4/4
2040		48		47-1/2		21 3/4		23 3/8	4/4
2044		52		51-1/2		23 3/4		25 3/8	4/4
2050		60		59-1/2		27 3/4		29 3/8	4/4
2054		64		63-1/2		29 3/4		31 3/8	4/4
2060		72		71-1/2		33 3/4		35 3/8	4/4
2426	28	30	27 1/2	29-1/2	23 3/4	12 3/4	23 3/4	14 3/8	6/6
2430		36		35-1/2		15 3/4		17 3/8	6/6
2438		44		43-1/2		19 3/4		21 3/8	6/6
2440		48		47-1/2		21 3/4		23 3/8	6/6
2444		52		51-1/2		23 3/4		25 3/8	6/6
2450		60		59-1/2		27 3/4		29 3/8	6/6
2454		64		63 1/2		29 3/4		31 3/8	6/6
2460		72		71 1/2		33 3/4		35 3/8	6/6
2826	32	30	31 1/2	29 1/2	27 3/4	12 3/4	27 3/4	14 3/8	6/6
2830		36		35 1/2		15 3/4		17 3/8	6/6
2838		44		43 1/2		19 3/4		21 3/8	6/6
2840		48		47 1/2		21 3/4		23 3/8	6/6
2844		52		51 1/2		23 3/4		25 3/8	6/6
2850		60		59 1/2		27 3/4		29 3/8	6/6
2854		64		63 1/2		29 3/4		31 3/8	6/6
2860*		72		71 1/2		33 3/4		35 3/8	6/6
3026	36	30	35 1/2	29 1/2	31 3/4	12 3/4	31 3/4	14 3/8	6/6
3030		36		35 1/2		15 3/4		17 3/8	6/6
3038		44		43 1/2		19 3/4		21 3/8	6/6
3040		48		47 1/2		21 3/4		23 3/8	6/6
3044		52		51 1/2		23 3/4		25 3/8	6/6
3050		60		59 1/2		27 3/4		29 3/8	6/6
3054*		64		63 1/2		29 3/4		31 3/8	6/6
3060*		72		71 1/2		33 3/4		35 3/8	6/6
3426	40	30	39 1/2	29 1/2	35 3/4	12 3/4	35 3/4	14 3/8	8/8
3430		36		35 1/2		15 3/4		17 3/8	8/8
3438		44		43 1/2		19 3/4		21 3/8	8/8
3440		48		47 1/2		21 3/4		23 3/8	8/8
3444		52		51 1/2		23 3/4		25 3/8	8/8
3450		60		59 1/2		27 3/4		29 3/8	8/8
3454*		64		63 1/2		29 3/4		31 3/8	8/8
3460*		72		71 1/2		33 3/4		35 3/8	8/8
3826	44	30	43 1/2	29 1/2	39 3/4	12 3/4	39 3/4	14 3/8	8/8
3830		36		35 1/2		15 3/4		17 3/8	8/8
3838		44		43 1/2		19 3/4		21 3/8	8/8
3840		48		47 1/2		21 3/4		23 3/8	8/8
3844		52		51 1/2		23 3/4		25 3/8	8/8
3850		60		59 1/2		27 3/4		29 3/8	8/8
3854*		64		63 1/2		29 3/4		31 3/8	8/8
3860*		72		71 1/2		33 3/4		35 3/8	8/8

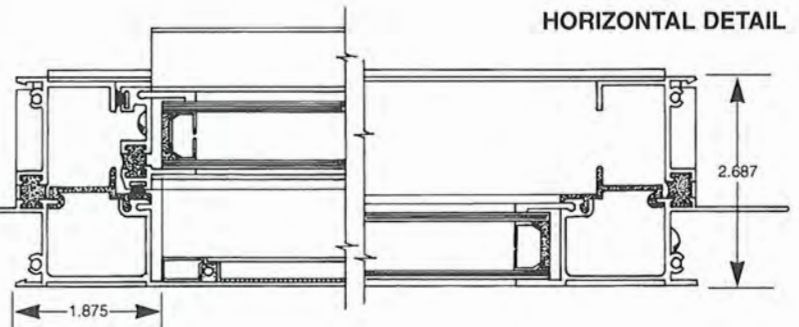
\* Meets EGRESS Requirements.

VERTICAL DETAIL



Designed for operating convenience. The lower sash tilts in for ease of cleaning. Sashes glide on a cushion of high-intensity pile weather-stripping which virtually eliminates intrusion of outside air, water and dust.

HORIZONTAL DETAIL





# Series 2100

## Thermal Break Sliding (Rolling) Primary Window

### Standard Sizes

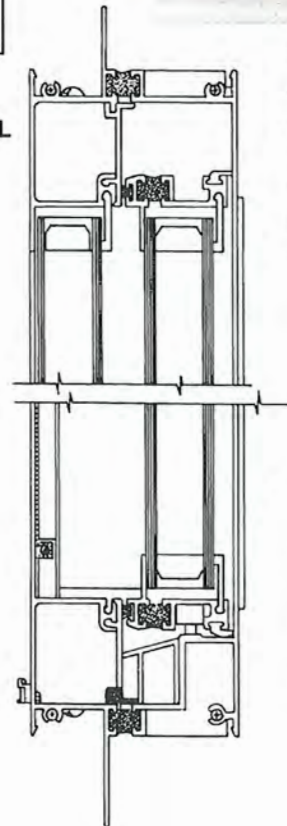
Standard Window Size	Rough Opening		Actual Size		Glass Size				Screen Size	
	Single Unit		Single Unit		Fixed		Operating		Width	Height
	Width	Height	Width	Height	Width	Height	Width	Height		
2020 2030 2040 2050	24	24 36 48 60	23-1/2	23-1/2 35-1/2 47-1/2 59-1/2	9-3/4	19-3/4 31-3/4 43-3/4 55-3/4	9-3/4	19-3/4 31-3/4 43-3/4 55-3/4	11-3/8	19-3/4 31-3/4 43-3/4 55-3/4
3020 3030 3040 3050	36	24 36 48 60	35-1/2	23-1/2 35-1/2 47-1/2 59-1/2	15-3/4	19-3/4 31-3/4 43-3/4 55-3/4	15-3/4	19-3/4 31-3/4 43-3/4 55-3/4	17-3/8	19-3/4 31-3/4 43-3/4 55-3/4
4020 4030 4040* 4050*	48	24 36 48 60	47-1/2	23-1/2 35-1/2 47-1/2 59-1/2	21-3/4	19-3/4 31-3/4 43-3/4 55-3/4	21-3/4	19-3/4 31-3/4 43-3/4 55-3/4	23-3/8	19-3/4 31-3/4 43-3/4 55-3/4
5020 5030* 5040* 5050*	60	24 36 48 60	59-1/2	23-1/2 35-1/2 47-1/2 59-1/2	27-3/4	19-3/4 31-3/4 43-3/4 55-3/4	27-3/4	19-3/4 31-3/4 43-3/4 55-3/4	29-3/8	19-3/4 31-3/4 43-3/4* 55-3/4
6020 6030* 6040* 6050*	72	24 36 48 60	71-1/2	23-1/2 35-1/2 47-1/2 59-1/2	33-3/4	19-3/4 31-3/4 43-3/4 55-3/4	33-3/4	19-3/4 31-3/4 43-3/4 55-3/4	35-3/8	19-3/4 31-3/4 43-3/4* 55-3/4
6020EV 6030EV 6040EV 6050EV	72	24 36 48 60	71-1/2	23-1/2 35-1/2 47-1/2 59-1/2	33	19-3/4 31-3/4 43-3/4 55-3/4	15-7/8	19-3/4 31-3/4 43-3/4 55-3/4	17-1/2	19-3/4 31-3/4 43-3/4 55-3/4
7020EV 7030EV 7040EV 7050EV	84	24 36 48 60	83-1/2	23-1/2 35-1/2 47-1/2 59-1/2	39	19-3/4 31-3/4 43-3/4 55-3/4	18-7/8	19-3/4 31-3/4 43-3/4 55-3/4	20-1/2	19-3/4 31-3/4 43-3/4 55-3/4
8020EV 8030EV 8040EV* 8050EV*	96	24 36 48 60	95-1/2	23-1/2 35-1/2 47-1/2 59-1/2	45	19-3/4 31-3/4 43-3/4 55-3/4	21-7/8	19-3/4 31-3/4 43-3/4 55-3/4	23-1/2	19-3/4 31-3/4 43-3/4 55-3/4
9020EV 9030EV 9040EV* 9050EV*	108	24 36 48 60	107-1/2	23-1/2 35-1/2 47-1/2 59-1/2	51	19-3/4 31-3/4 43-3/4 55-3/4	24-7/8	19-3/4 31-3/4 43-3/4 55-3/4	26-1/2	19-3/4 31-3/4 43-3/4 55-3/4

\* Meets EGRESS Requirements.

The Series 2100 is a Single Slide (Rolling) Thermal Break Window. This is a maintenance free thermal efficient window, that can be manufactured in standard sizes or in custom sizes.

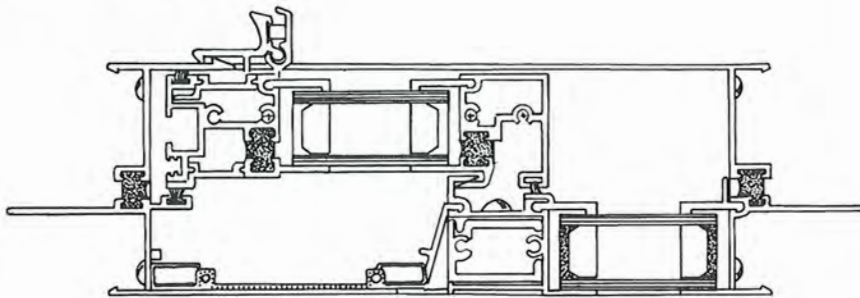


VERTICAL DETAIL



Four rollers on each sash provide ease of operation. Rollers are rust-free bronze to assure years of service.

HORIZONTAL DETAIL



MULLION

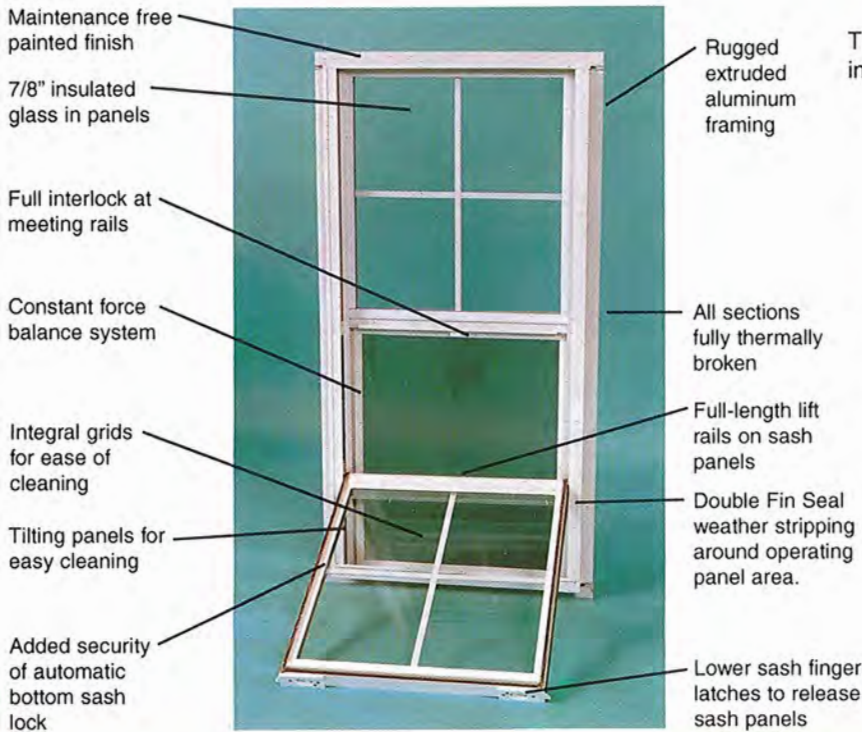




# The Series 2000 Primary Window

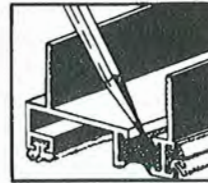
(2000 Single Hung, 2100 Slider, 2200 Fixed)

*These windows are truly maintenance free thermally efficient window systems. The windows are designed for the new home builder, the remodeling contractor and the home owner. The windows are manufactured in standard sizes or custom sizes for easy installation. The home owner will have a durable, maintenance free easy to clean window.*



## How Our Thermal Break Works

There is NO direct metal connections between inside and outside of window.



Features a thermal break design—a polyurethane barrier in the frame and sash, virtually eliminates heat loss and condensation buildup on the interior frame.

Channel is filled with strong high-density plastic (polyurethane) Aluminum wall is cut away.



Energy losses are virtually stopped at this break.

## Series 2200

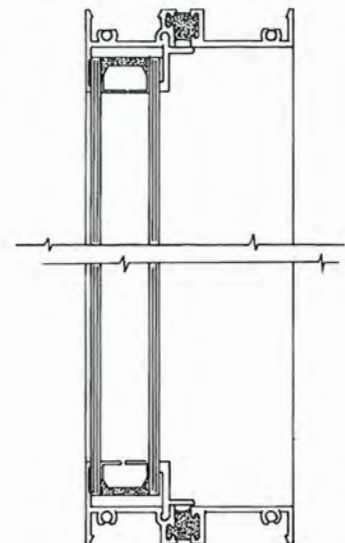
Thermal Break Fixed Lite Window

### Standard Sizes

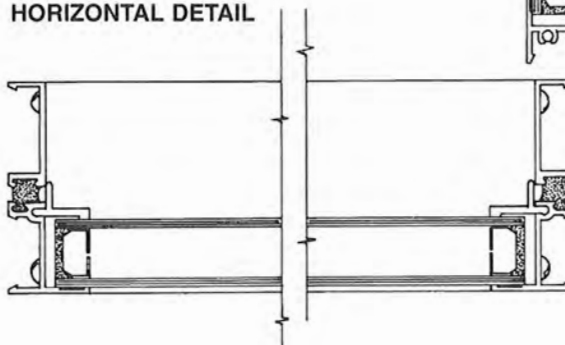
Standard Window Size	Rough Opening		Actual Size		Glass Size	
	Single Unit		Single Unit		Width	Height
	Width	Height	Width	Height		
2020	24	24	23-1/2	23-1/2	22-1/4	22-1/4
2030		36		35-1/2		34-1/4
2040		48		47-1/2		46-1/4
2050		60		59-1/2		58-1/4
3020	36	24	35-1/2	23-1/2	34-1/4	22-1/4
3030		36		35-1/2		34-1/4
3040		48		47-1/2		46-1/4
3050		60		59-1/2		58-1/4
4020	48	24	47-1/2	23-1/2	46-1/4	22-1/4
4030		36		35-1/2		34-1/4
4040		48		47-1/2		46-1/4
4050		60		59-1/2		58-1/4
5020	60	24	59-1/2	23-1/2	58-1/4	22-1/4
5030		36		35-1/2		34-1/4
5040		48		47-1/2		46-1/4
5050		60		59-1/2		58-1/4
6020	72	24	71-1/2	23-1/2	70-1/4	22-1/4
6030		36		35-1/2		34-1/4
2668*	29-3/4	77-3/4	29-1/4	77-1/4	28	76
3068*	35-3/4	77-3/4	35-1/4	77-1/4	34	76
4068*	47-3/4	77-3/4	47-1/4	77-1/4	46	76

\* Meets EGRESS Requirements.

### VERTICAL DETAIL



### HORIZONTAL DETAIL







## QUALITY WITHOUT COMPROMISE!



## SPECIFICATIONS

*The Columbia thermal break primary window is designed for single dwelling through multi-family units. This window is manufactured in standard sizes for new construction, or custom sizes for retro fit applications.*

**GENERAL:** The Series 2000 single hung thermal break units are SH-C35; the Series 2100 single slider units are HS-C-25; and the C-2200 picture units are F-C35. The windows shall comply and bear the quality certification label in accordance with the ANSI/AAMA certification program 101-93.

**MATERIAL:** The Columbia Series 2000, 2100 and 2200 frames and sash members shall be aluminum alloy 6063-T5 within commercial tolerances. Frame and sash members shall have a thermal barrier. The internal fins will have suitable break-off and nailing grooves.

**FINISH:** Standard finish shall be of electrostatically applied baked enamel. White and bronze are standard finishes.

**WEATHERSTRIPPING:** Weatherstripping shall be high density, silicone treated, polypropylene with a double mylar fin running through the center of the pile. Weatherstripping to be located on all four sides of operable sash to enhance maximum air and water infiltration protection. Bulb vinyl to be located on exterior of sashes at sill for weather tight seal.

**CONSTRUCTION:** All joints of frame and sash members shall be neatly fitted, securely connected and permanently water tight. Frames shall have step point construction for maximum rigidity. Both frames and sash members shall use an extruded screw boss that is an integral part of the extruded section. The operating sash shall interlock at both meeting rail and closing jamb. Sash shall roll on self-lubricating ball bearing adjustable rollers, and be easily removable from inside when in open position and not removable when in locked position. Mullions to be furnished as required. Fixed and movable sash use drop in type glazing.

**HARDWARE:** All fasteners, screws, rivets and other miscellaneous fastening devices shall be of aluminum, stainless steel or other non-corrosive material compatible with aluminum. Single hung balances shall provide a positive lifting force, shall operate freely in both directions and shall hold the sash stationary in any position. Coil spring type balances are standard. Horizontal rollers shall be of wheel and axle type constant force. No adjustments necessary.

**GLAZING:** Windows shall be glazed with 7/8" double or triple sealed insulated glass. Also available: bronze tint, low E, and muntin bars between the glass at an extra charge.

**SCREENS:** Screens shall be available on Series 2000 and 2100 windows and shall be easily installed or removed from inside without removing operating sash. Screen frames shall be aluminum sections securely joined at the corners. Screen cloth shall be 18x16 mesh charcoal fiberglass or charcoal aluminum.

*Your Assurance of Quality*





# Columbia

*Windows & Doors*

1600 North Jackson  
Kansas City, Missouri 64120

**816-241-5800**

**Toll Free 1-800-892-8703**

Lindsborg, KS  
(785) 227-3087 • 1-800-255-0174

---

Iola, KS  
(316) 365-3166 • 1-800-362-0503

---

Pawnee, OK  
(918) 762-3001 • 1-800-722-4144

**Distributed by:**

---

*Your Assurance of Quality*

